

# FUTURA+i



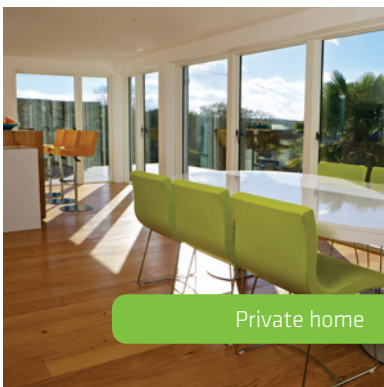
## Elegant, innovative and inward opening

- Made of aluminium and PUR
- 53-mm slim sashes for lightness and maximum light
- High-insulating and energy saving

### **Futura+i is inward opening and features all the benefits of its sister series Futura+**

A complete series that ensures maximum light, simple and slim lines as well as top-of-line energy savings and functionality. In contrast to Futura+, Futura+i also has an aluminium profile on the inside, making it the perfect choice for a completely maintenance-free solution, inside and outside. A window series that is built to last and provide energy savings far into the future.

Its sister series Futura+ is the corresponding outward opening series with the same external design. Together, the two series offer a complete host of functions that provide ample of scope in both new building and renovations without creating any architectural dilemmas.



Private home



Cirkelhuset, Køge



Solbærhaven, Valby



uk@idealcombi.com | www.idealcombi.com

**idealcombi**  
Enhancing windows

## High-insulating PUR core

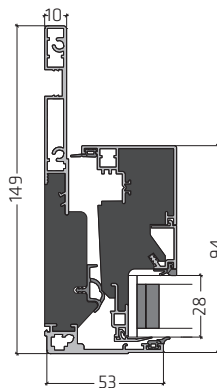
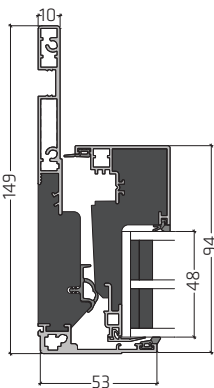
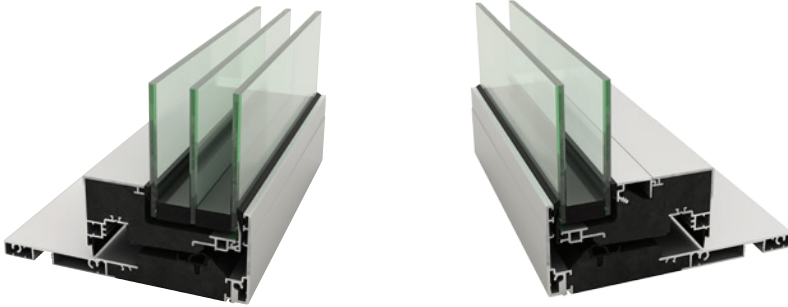
We have integrated a high-insulating PUR (polyurethane) core between the inside and outside aluminium profiles which gives the windows and doors groundbreaking performance in terms of total energy costs. The robust PUR ensures maintenance-free surfaces in the window's 'wet' frame zone and thus longer life-time and total economy. The innovative thinking behind the design places strong focus on the environment, reducing energy consumption and results in economic savings.

## Free security package

Our solid quality fittings make our windows and doors highly resistant to uninvited guests. The glued glazing is common to all of Idealcombi's product range. As standard, all windows and doors in Futura<sup>+</sup>i come with anti-theft fittings, safety striker plates and several closing points.

Triple-glazed window

Double-glazed window



## Inward opening

Inward opening with triple glazing

$$E_{\text{ref}} = +27.7$$

$$U_w = 0.83$$

A

Inward opening with double glazing

$$E_{\text{ref}} = -8.2$$

$$U_w = 1.39$$

B

## A QUICK OVERVIEW

- Maintenance-free surfaces
- Maintenance-free wet zone in the rebate
- Smooth and elegant external aluminium panel
- High-insulating PUR core between outside and inside to reduce any thermal bridge and heat loss
- Free security package
- 10-year warranty
- Uniform design regardless of functionality



# FUTURA+

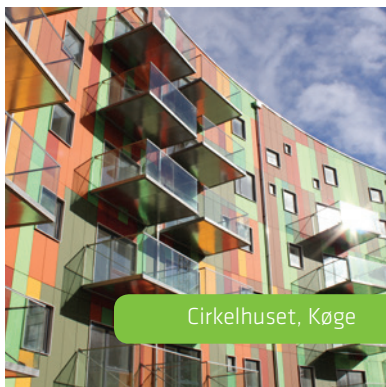
## Elegant and innovative

- Made of aluminium, PUR and wood
- 53-mm slim sashes for lightness and maximum light
- High-insulating and energy saving

**Futura+ sets the standard for the energy windows and doors of the future.**

Together, the slim sashes and large glass sections offer a unique opportunity to design buildings that are slim and have simple lines. In addition, Futura+ boasts record-high energy performance and broad functionality. Futura+ meets all requirements for state-of-the-art homes.

Futura+ is an outward opening windows series with all the conventional opening functions and then some. Its sister series Futura+i is the corresponding inward opening series with tilt and turn function and the same external design. Together, the two series offer a complete host of functions that provide ample of scope in both new building and renovations without creating any architectural dilemmas.



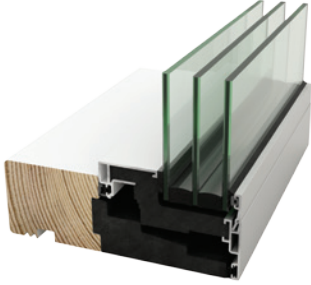
## High-insulating PUR core

We have integrated a high-insulating PUR (polyurethane) core between the outside aluminium profile and inside wood profile which gives the windows and doors groundbreaking performance in terms of total energy costs. The robust PUR ensures maintenance-free surfaces in the window's 'wet' frame zone and thus longer lifetime and total economy. The innovative thinking behind the design places strong focus on the environment, reducing energy consumption and results in economic savings.

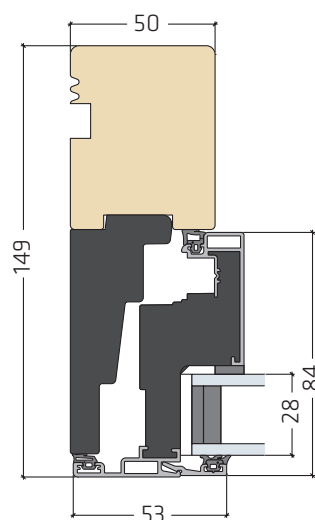
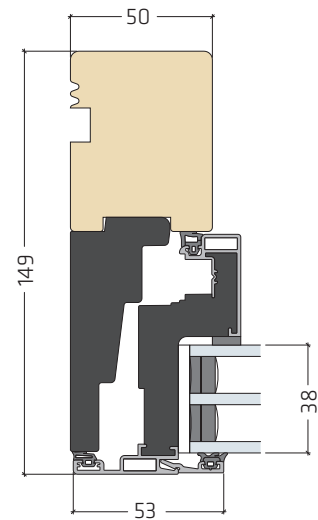
## Free security package

Our solid quality fittings make our windows and doors highly resistant to uninvited guests. The glued glazing is common to all of Idealcombi's product range. As standard, all windows and doors in Futura+ come with anti-theft fittings, safety striker plates and several closing points.

Triple-glazed window



Double-glazed window



## Outward opening

Outward opening with triple glazing

$$E_{ref} = +24.1$$

$$U_w = 0.87$$



Outward opening with double glazing

$$E_{ref} = +1.5$$

$$U_w = 1.30$$



## A QUICK OVERVIEW

- Maintenance-free external surfaces
- Maintenance-free wet zone in the rebate
- Smooth and elegant external aluminium panel
- Finger-jointed and knotless heartwood.
- High-insulating PUR core between outside and inside to reduce any thermal bridge and heat loss
- Free security package
- 10-year warranty

# NATION ENERGY



## Historic look - modern energy-thinking

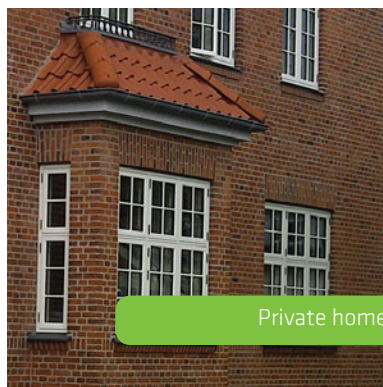
- Construction in maintenance-free alu-composite-wood
- Designed with a historic 'putty rebate' in modern materials
- High energy balance with triple glazing

Nation Energy is an energy update of our classic Nation product range. Nation Energy has the exact same external design and maintenance benefits as Nation but is fitted with triple glazing energy windows and double weather strips. This engenders significant energy savings that immediately show on your heating bill.

The wide range of opening functions and solutions pave the way for myriad applications, and together with Nation, it is possible to create the right energy balance in any project - new building and renovation.



Havnegade, Copenhagen



Private home



Egilsgade, Copenhagen

### Beautiful and smooth aluminium profile

The wood used for Nation Energy is also protected by the external, powder-coated aluminium profile that extends the lifetime of the window, is maintenance free and gives a beautiful and smooth surface for many years.

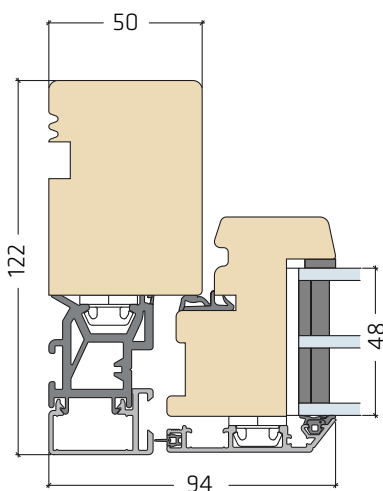
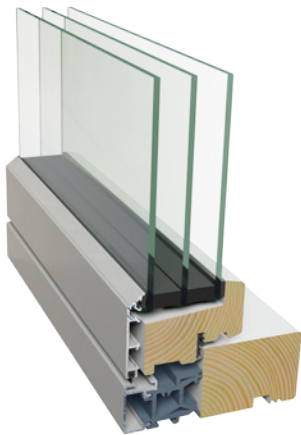
### Free security package

Our solid quality fittings make our windows and doors highly resistant to uninvited guests. The glued glazing is common to all of Idealcombi's product range. As standard, all windows and doors in **Nation Energy** come with anti-theft fittings, safety striker plates and several closing points.

A

$$E_{\text{ref}} = +12.9$$
$$U_w = 0.87$$

Triple-glazed window



## A QUICK OVERVIEW

- Maintenance-free external surfaces
- Maintenance-free wet zone in the rebate
- Beautiful, smooth and elegant external aluminium panel
- Finger-jointed and knotless heartwood.
- Composite construction between outside and inside to reduce any thermal bridge and heat loss
- Free security package
- With or without contemporary, inside profile groove
- 10-year warranty

# NATION

## Classic beauty - modern sense

- Made of wood-composite-alu
- Designed with 'putty rebate' for modernising older residential properties
- Original, historical design without costly maintenance

Nation in combined wood-composite-alu is designed in cooperation with experts in architecture for older residential properties and mimics the original putty rebate around the window. Nation is used in all types of buildings where you want to preserve the original features in a modern and maintenance-free construction.

### Improved insulation and longer lifetime

Nation is made of the insulating and indestructible material composite between the outside and inside of the window. This minimises heat loss through the construction and ensures maintenance-free surfaces in the rebate - i.e. the 'wet' zone of the window - and thus ensures longer lifetime and better economy.



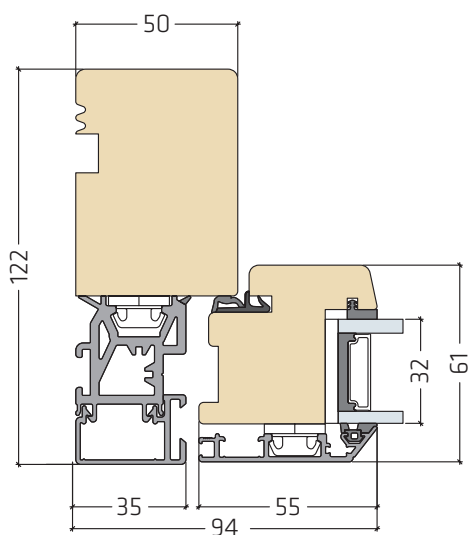
The inside frame and sash of Nation are made of at least 60% heartwood in all surfaces and rebates outside the sealing plane. Externally, the entire construction is protected by the powder-coated aluminium profile, which extends the lifetime of the window, is maintenance free and gives a beautiful and smooth surface for many years.

### Anti-theft features

In all opening functions with espagnolette handles, Nation is as standard equipped with our extra solid and anti-theft fittings.



$$E_{\text{ref}} = -26$$
$$U_w = 1.45$$



## A QUICK OVERVIEW

- Maintenance-free external surfaces
- Maintenance-free wet zone in the rebate
- Beautiful, smooth and elegant external aluminium panel with 'putty rebate' look.
- Finger-jointed and knotless heartwood.
- Composite construction between outside and inside to reduce any thermal bridge and heat loss
- Free security package
- With or without contemporary, inside profile groove
- 10-year warranty



# FRAME

## Classic design for all buildings

- Made of wood-composite-aluminium
- Designed as the original wooden window with glass strip marking
- Clean, classic lines without problems and expensive maintenance with long lifetime

Frame is Idealcombi's classic design range with a maintenance-free wood-composite-aluminium construction. The design reflects the lines of the well-known, traditional Danish wooden window with the classic glass strip, which in Frame is replicated in the external aluminium profile. If you want a more historic look, the sister series Nation is the perfect choice – it is made in the same materials as Frame, but its external design replicates the old, original 'putty rebate' windows.



Victor Borges Plads  
Copenhagen



Benediktevej, Ringsted



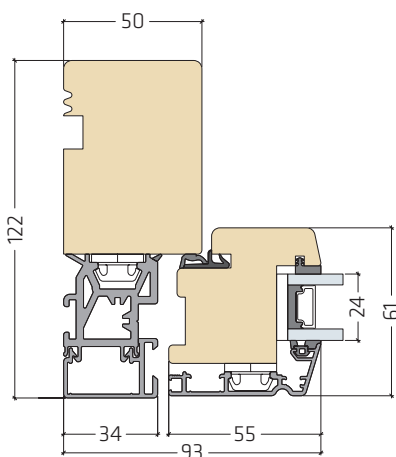
Svanevej, Hurup

## Improved insulation and longer lifetime

Frame is made of the insulating and indestructible material composite between the outside and inside of the window. This minimises heat loss through the construction and ensures maintenance-free surfaces in the rebate – i.e. the 'wet' zone of the window – and thus ensures longer lifetime and better economy.

The inside frame and sash of Frame is made of at least 60% heartwood in all surfaces and rebates outside the sealing plane.

Externally, the entire construction is protected by the powder-coated aluminium profile, which extends the lifetime of the window, is maintenance free and gives a beautiful and smooth surface for many years. In all opening functions with espagnolette handles, Frame is as standard equipped with our extra solid and anti-theft fittings.



C

$$E_{\text{ref}} = -26$$
$$U_w = 1.45$$

## A QUICK OVERVIEW

- Maintenance-free external surfaces
- Maintenance-free wet zone in the rebate
- Beautiful, smooth and elegant external aluminium panel with glass strip marking.
- Finger-jointed and knotless heartwood
- With or without contemporary, inside profile groove
- Composite construction between outside and inside to reduce any thermal bridge and heat loss
- Free security package
- 10-year warranty

# CONTURA FRAME

## Safety up high

- Inward opening tilt and turn solutions
- Maintenance-free wood-aluminium construction
- Same external design as Frame

Contura is Idealcombi's product range with inward opening tilt and turn windows and doors.

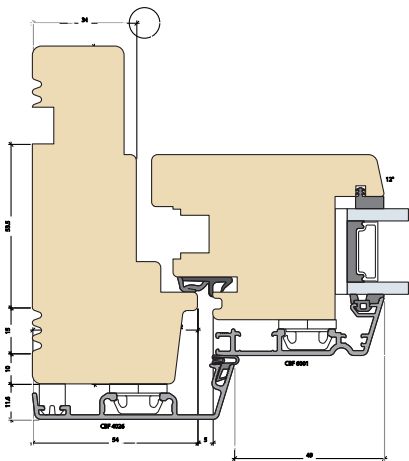
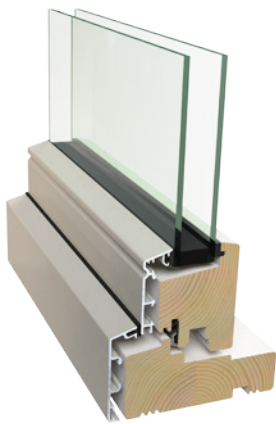
The Contura Frame series is designed using Frame's external profiles, which makes it possible to combine Contura Frame with Frame in facade solutions for a uniform design, while ensuring different functions.

The tilt and turn function makes it easy to clean the glass from the inside without having to engage in risky manoeuvres. Moreover, the opening function allows you to air your home without risk to children and pets. The Contura series is therefore extremely popular in multi-storey buildings that prioritise safety up high and space-saving passage in e.g. external galleries and French balconies.



## The little difference

The Contura series has inside frames and sashes made of 60% heartwood and the same external design as Frame, which is protected by a powder coated, maintenance-free aluminium profile. The Contura Frame series is available in double glazing, but if you want to boost energy savings, you may consider our Contura Nation series which comes with triple glazing.



C

$$E_{\text{ref}} = -32$$

$$U_w = 1.43$$

## A QUICK OVERVIEW

- Same external design as Frame
- Tilt and turn function with several opening options
- Can be cleaned from the inside and therefore offers safety in multi-storey building
- Obvious choice for external galleries and French balconies
- Maintenance-free external surfaces
- Beautiful, smooth and elegant external aluminium panel
- Finger-jointed and knotless heartwood
- Security package
- 10-year warranty

# CONTURA NATION

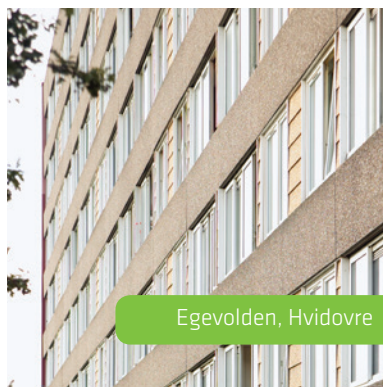
## Safety up high

- Inward opening tilt and turn solutions
- Maintenance-free wood-aluminium construction
- Same external design as Nation

Contura is Idealcombi's product range with inward opening tilt and turn windows and doors.

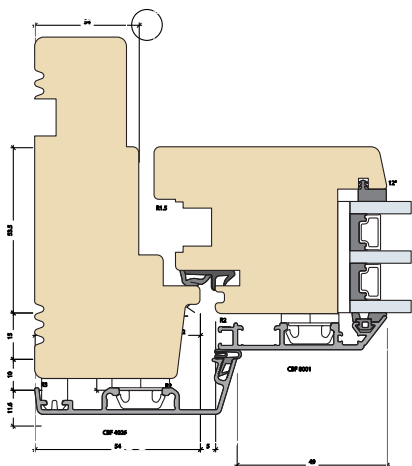
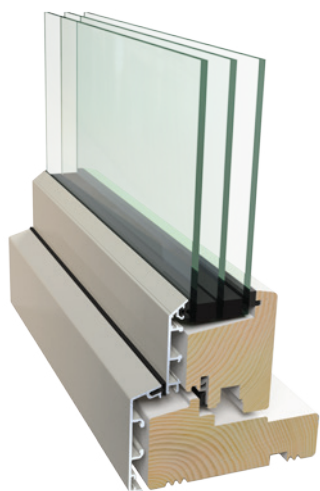
The Contura Nation series is designed using Nation's external profiles, which makes it possible to combine Contura Nation with Nation in facade solutions for a uniform design, while ensuring different functions.

The tilt and turn function makes it easy to clean the glass from the inside without having to engage in risky manoeuvres. Moreover, the opening function allows you to air your home without risk to children and pets. The Contura series is therefore extremely popular in multi-storey buildings that prioritise safety up high and space-saving passage in e.g. external galleries and French balconies.



## An extra energy dimension

The Contura series has inside frames and sashes made of 60% heartwood and the same external design as Nation, which is protected by a powder coated, maintenance-free aluminium profile. Moreover, Contura Nation is made with triple glazing energy windows and double sealing layer, which ensures further savings on the heating bill and reduces CO2 emissions. The sister series Contura Frame is available in double glazing.



C

$$E_{\text{ref}} = -18$$
$$U_w = 1.14$$

## A QUICK OVERVIEW

- Same external design as Nation
- Comes in triple glazing as standard
- Tilt and turn function with several opening options
- Can be cleaned from the inside and therefore offers safety in multi-storey building
- Maintenance-free external surfaces
- Beautiful, smooth and elegant external aluminium panel
- Finger-jointed and knotless heartwood
- Security package
- 10-year warranty