



Vanceva® color PVB interlayer

Offering architects a dynamic palette for decorative glazing

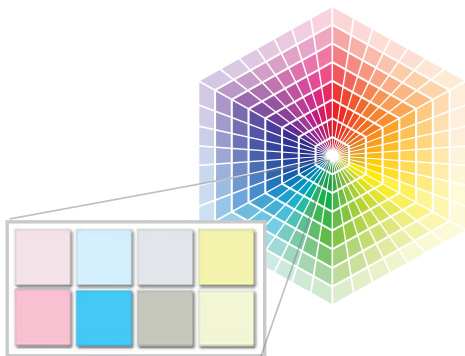
vanceva 
A WORLD OF COLOR

Thousands of color possibilities

Producing a broad spectrum of colors and moods that are unachievable using stock selections of glass, Vanceva® gives architects and designers more creative freedom with glass than ever before. Vanceva color interlayers can be combined to produce more than 17,000 transparent, translucent, or opaque color options to help create the desired tone and intensity.

When Vanceva color interlayers are combined with tinted or reflective glass, the design possibilities are nearly limitless. No other interlayer brand delivers the complete spectrum of colors for laminated glass like Vanceva colors.

Used in curtain walls, atriums, skylights, partitions, and conference rooms, Vanceva color interlayers allow the most expressive designs with distinctive hues from subtle to dramatic.







Color technology

All Vanceva color interlayers are made with heat- and light-stable colorants instead of dyes to resist fading and have undergone vigorous durability testing to ensure long-term color stability. In fact, laminated glass made with Vanceva color interlayers delivers effective protection from harmful UV radiation and reduces solar energy transmittance and heat buildup. The interlayers screen out up to 99% of damaging UV radiation up to 380 nm to help retard color fading and the deterioration of fabrics and furnishings.

Additional benefits of laminated glass

In addition to proven acoustic performance, Vanceva interlayers deliver all the other benefits inherent with laminated glass, including:

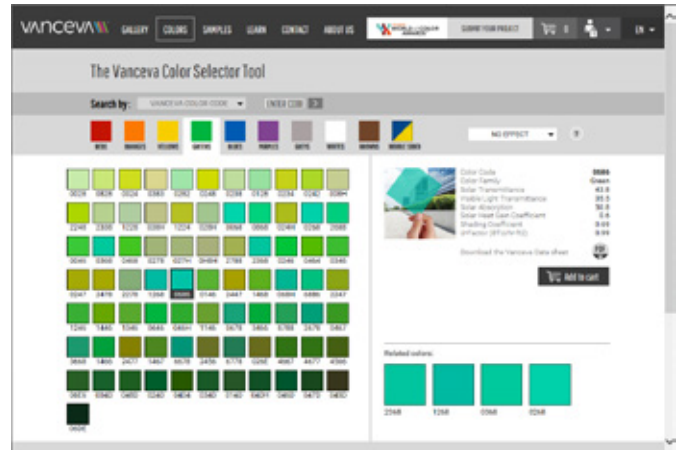
-  Protecting building occupants and pedestrians from accidental glass impact, breakage, or fallout
-  Providing burglary and forced-entry resistance, ballistic protection, and bomb blast resistance
-  Providing hurricane-force-resistant technology to laminated glazing systems
-  Filtering more than 99% of UV rays, controlling visible light radiation, and reducing heat buildup and thermal stress

Create your next glass design online

By using the Vanceva color selector tool on our website, architects and designers can explore color combinations available using the Vanceva color system. With the tool, you can search by Vanceva, RGB, Pantone, RAL, or NGB color codes or use the color converter to reach the closest color match to each system. Then, order samples to perform lighting tests, share with customers, and compare for compatibility with other projects.

Access the Vanceva color studio at www.vanceva.com to:

- Match your Pantone, RAL, RGB, and NGB colors to the equivalent Vanceva color combination.
- Access technical data for color selections.
- Explore amazing projects from around the world using the Vanceva color system by viewing our online gallery.
- Verify the actual sample color before specifying for your project.
- Order samples.



Architects and designers trust Saflex®

Vanceva is a brand within the Saflex® polyvinyl butyral interlayers business unit of Eastman Chemical Company. Around the world, architects and designers trust Saflex when performance and safety are their most critical concerns. The reason for their confidence is simple. No matter what the specifications or performance targets, Saflex interlayer technology delivers advanced glazing performance for demanding applications.



EASTMAN
The results of insight™

Eastman Chemical Company Corporate Headquarters

P.O. Box 431
Kingsport, TN 37662-5280 U.S.A.

U.S.A. and Canada, 800-EASTMAN (800-327-8626)
Other Locations, +(1) 423-229-2000

www.eastman.com/locations

Although the information and recommendations set forth herein are presented in good faith, Eastman Chemical Company and its subsidiaries make no representations or warranties as to the completeness or accuracy thereof. You must make your own determination of its suitability and completeness for your own use, for the protection of the environment, and for the health and safety of your employees and purchasers of your products. Nothing contained herein is to be construed as a recommendation to use any product, process, equipment, or formulation in conflict with any patent, and we make no representations or warranties, express or implied, that the use thereof will not infringe any patent. NO REPRESENTATIONS OR WARRANTIES, EITHER EXPRESS OR IMPLIED, OF MERCHANTABILITY, FITNESS FOR A PARTICULAR PURPOSE, OR OF ANY OTHER NATURE ARE MADE HEREUNDER WITH RESPECT TO INFORMATION OR THE PRODUCT TO WHICH INFORMATION REFERS AND NOTHING HEREIN WAIVES ANY OF THE SELLER'S CONDITIONS OF SALE.

Safety Data Sheets providing safety precautions that should be observed when handling and storing our products are available online or by request. You should obtain and review available material safety information before handling our products. If any materials mentioned are not our products, appropriate industrial hygiene and other safety precautions recommended by their manufacturers should be observed.

© 2016 Eastman Chemical Company. Eastman brands referenced herein are trademarks of Eastman Chemical Company or one of its subsidiaries or are being used under license. The ® symbol denotes registered trademark status in the U.S.; marks may also be registered internationally. Non-Eastman brands referenced herein are trademarks of their respective owners.



Vanceva® color PVB interlayer

Offering architects a dynamic palette for decorative glazing

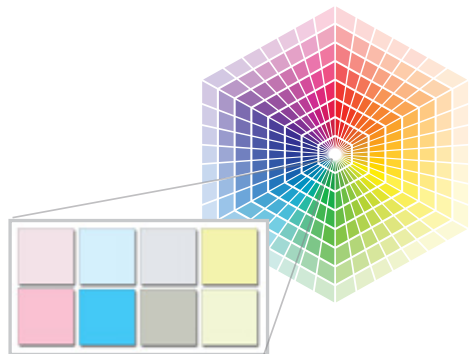
vanceva 
A WORLD OF COLOR

Thousands of color possibilities

Producing a broad spectrum of colors and moods that are unachievable using stock selections of glass, Vanceva® gives architects and designers more creative freedom with glass than ever before. Vanceva color interlayers can be combined to produce more than 17,000 transparent, translucent, or opaque color options to help create the desired tone and intensity.

When Vanceva color interlayers are combined with tinted or reflective glass, the design possibilities are nearly limitless. No other interlayer brand delivers the complete spectrum of colors for laminated glass like Vanceva colors.

Used in curtain walls, atriums, skylights, partitions, and conference rooms, Vanceva color interlayers allow the most expressive designs with distinctive hues from subtle to dramatic.







Color technology

All Vanceva color interlayers are made with heat- and light-stable colorants instead of dyes to resist fading and have undergone vigorous durability testing to ensure long-term color stability. In fact, laminated glass made with Vanceva color interlayers delivers effective protection from harmful UV radiation and reduces solar energy transmittance and heat buildup. The interlayers screen out up to 99% of damaging UV radiation up to 380 nm to help retard color fading and the deterioration of fabrics and furnishings.

Additional benefits of laminated glass

In addition to proven acoustic performance, Vanceva interlayers deliver all the other benefits inherent with laminated glass, including:

-  Protecting building occupants and pedestrians from accidental glass impact, breakage, or fallout
-  Providing burglary and forced-entry resistance, ballistic protection, and bomb blast resistance
-  Providing hurricane-force-resistant technology to laminated glazing systems
-  Filtering more than 99% of UV rays, controlling visible light radiation, and reducing heat buildup and thermal stress

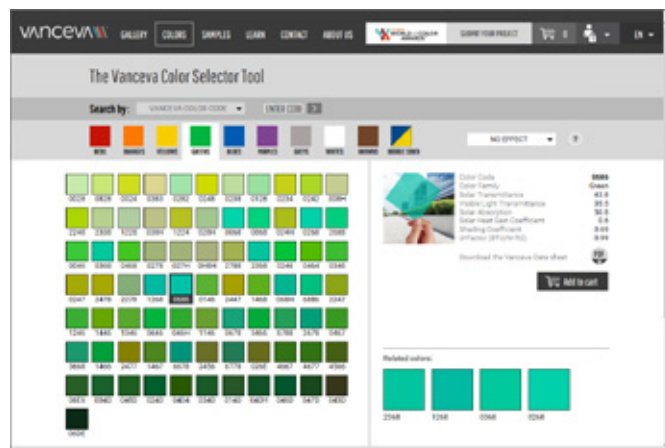
EASTMAN

Create your next glass design online

By using the Vanceva color selector tool on our website, architects and designers can explore color combinations available using the Vanceva color system. With the tool, you can search by Vanceva, RGB, Pantone, RAL, or NGB color codes or use the color converter to reach the closest color match to each system. Then, order samples to perform lighting tests, share with customers, and compare for compatibility with other projects.

Access the Vanceva color studio at www.vanceva.com to:

- Match your Pantone, RAL, RGB, and NGB colors to the equivalent Vanceva color combination.
- Access technical data for color selections.
- Explore amazing projects from around the world using the Vanceva color system by viewing our online gallery.
- Verify the actual sample color before specifying for your project.
- Order samples.



Architects and designers trust Saflex®

Vanceva is a brand within the Saflex® polyvinyl butyral interlayers business unit of Eastman Chemical Company. Around the world, architects and designers trust Saflex when performance and safety are their most critical concerns. The reason for their confidence is simple. No matter what the specifications or performance targets, Saflex interlayer technology delivers advanced glazing performance for demanding applications.



EASTMAN

The results of insight™

Eastman Chemical Company Corporate Headquarters

P.O. Box 431
Kingsport, TN 37662-5280 U.S.A.

U.S.A. and Canada, 800-EASTMAN (800-327-8626)
Other Locations, +(1) 423-229-2000

www.eastman.com/locations

Although the information and recommendations set forth herein are presented in good faith, Eastman Chemical Company and its subsidiaries make no representations or warranties as to the completeness or accuracy thereof. You must make your own determination of its suitability and completeness for your own use, for the protection of the environment, and for the health and safety of your employees and purchasers of your products. Nothing contained herein is to be construed as a recommendation to use any product, process, equipment, or formulation in conflict with any patent, and we make no representations or warranties, express or implied, that the use thereof will not infringe any patent. NO REPRESENTATIONS OR WARRANTIES, EITHER EXPRESS OR IMPLIED, OF MERCHANTABILITY, FITNESS FOR A PARTICULAR PURPOSE, OR OF ANY OTHER NATURE ARE MADE HEREUNDER WITH RESPECT TO INFORMATION OR THE PRODUCT TO WHICH INFORMATION REFERS AND NOTHING HEREIN WAIVES ANY OF THE SELLER'S CONDITIONS OF SALE.

Safety Data Sheets providing safety precautions that should be observed when handling and storing our products are available online or by request. You should obtain and review available material safety information before handling our products. If any materials mentioned are not our products, appropriate industrial hygiene and other safety precautions recommended by their manufacturers should be observed.

© 2016 Eastman Chemical Company. Eastman brands referenced herein are trademarks of Eastman Chemical Company or one of its subsidiaries or are being used under license. The ® symbol denotes registered trademark status in the U.S.; marks may also be registered internationally. Non-Eastman brands referenced herein are trademarks of their respective owners.